



NEWSLETTER ■ SPRING 2024

## MR BLACKHEATH NEIL RHIND WAS A SUPERB LOCAL SERVANT

Our President Neil Rhind, who has died aged 87, was simply Mr Blackheath. He devoted 55 years to your Society, was widely acknowledged as a leading local historian and writer and received many honours and accolades.

He died in the QE2 Hospital, Woolwich, on February 10 after a short illness. An MBE and FSA, he was a remarkable resident of Blackheath. No-one knew as much about its detailed history and he shared his knowledge generously over the years in his books.

As a Fellow of the Society of Antiquaries, he had asked for a notice of his passing to be inserted in The Times newspaper, which he regarded as the journal of record, and this was done five days after he died.

Written by Neil himself, it gave biographical details, said he was the President of our Society and the Vice-President of the Greenwich Historical Society and ended with the words: "Father, Grandfather and Greatgrandfather."

A journalist by training and a historian by inclination, he built an enormous archive concerning the history of local buildings, assembled a complete collection of publications and created detailed records of the local amenity societies.

Born in the same year as the founding of the Blackheath Society in 1937, he was our Chair for many years and became President in 2016.





As Secretary of the Blackheath Preservation Trust he was centrally involved in raising funds and building support to prevent the demolition of Blackheath Halls (see the 1977 newspaper story on page 7) and the Conservatoire. His direct involvement also saved many other architecturally outstanding Blackheath buildings.

He was awarded the Freedom of the Royal Borough of Greenwich in May 2017. Greenwich Council held a one-minute silence in his memory at its first meeting after his death, as did the Greenwich Historical Society.

For over 50 years he gave talks and conducted many local walks. His comprehensive knowledge of the local area was unmatched, and the three volumes of his *Blackheath Village and its Environs*, written over a period of 40 years, are the definitive works on this outstanding area of London.

In an interview with Neil in 2013 his friend and fellow local historian Julian Watson said: "Neil has been a remarkable resident of Blackheath



The photograph above shows Neil apparently defending part of the Cator Estate against illegal entrants. The one on the left below was taken by his wife on holiday in Hungary when he was puffing at his pipe in a law-abiding place. The sign says Area For Smoking in four languages. The front page photograph shows spring bluebells at Severndroog Castle

all his life. He built an enormous archive of local artefacts, including a complete collection of magazines from 1898 onwards."

"He created detailed records of local organisations including the Greenwich and Westcombe Societies and the Friends of the National Maritime Museum. His direct, sometimes somewhat unorthodox involvement directly saved many architecturally outstanding Blackheath buildings from destruction."

The interview can be seen on [www.blackheatharchive.org](http://www.blackheatharchive.org). When there, go to Films, Neil Rhind and then Neil's Life to view it. A full list of his many achievements appears on pages 4 and 5 of this *Newsletter*. Tributes have poured in since his passing and some of these are included on the next page.

He is profoundly missed by us all and the Society sends its sincere condolences to his wife Elizabeth and all their family. Their son Iain and daughter Alexandra pre-deceased him.



## TRIBUTES IN PRAISE OF NEIL RHIND'S WORK



CHARLES BATCHELOR • LEE MANOR SOCIETY

We note Neil's death with great sadness. He attended several of the Society's annual general meetings in recent years to talk knowledgeably on subjects of local interest. I also remember him as a perennially friendly and positive person if I bumped into him in the street. His passing is a great loss to community life in Blackheath and Lee.

BLACKHEATH HALLS

We are very sorry to learn that Neil Rhind has passed away. He was a remarkable resident of Blackheath all his life. Without him the Halls simply would not exist as the thriving and busy performance venue it is today. Neil will be profoundly missed by all at Blackheath Halls and we send our deepest condolences to his wife Liz and their family.

BRIDGET PRENTICE

I was deeply saddened to hear that Neil had passed away. He was an immense figure in Blackheath and both boroughs owe him a debt of gratitude for the way in which he brought the Heath and its surrounding history alive to so many people. I always found him a joy to be with and I know that is true of so many who earned his friendship. He will be truly missed. My sincere condolences to his family.

ALEX GRANT

I am very sad to hear of this. Neil was a huge presence in Blackheath and a very talented man. He gave me much advice and gently corrected many historical howlers I made when I was a councillor in Blackheath.

ANNE DINGSDALE

What an amazing historian. I was referring to a couple of his detailed Blackheath books only yesterday and I found the obscure Victorian engineer I sought at home in three local streets. Neil will be missed, what achievements.

THE BLACKHEATH HUB

A sad loss for the Village. Neil stood up for Blackheath and its history. No one knew more.

THE BLACKHEATH BUGLE

If you haven't heard of Neil Rhind then you surely haven't been paying attention. It would be no exaggeration to say that he is the authority on Blackheath's history. If you've never read his books, then you should check them out. Reading *Blackheath Village & Environs* is like peeling back the layers of time. It's a forensic examination of every little nook and cranny of the area.

PAUL WATTS • THE BLACKHEATH SOCIETY

Neil was an excellent President who certainly liked to get involved and help us with our various activities, as well as ably chairing AGMs and leading local Open House Weekend walks. His wise counsel and advice will be missed. He made an immense contribution to the Blackheath and Greenwich areas over his career and later years, and his enthusiasm and knowledge of local history was unparalleled. We are fortunate that his memory will long live on in his work and many publications.

JULIAN WATSON • GREENWICH HISTORICAL SOCIETY

With great sadness we learned Neil had died. He was Vice-President, former President and a long serving and very active member of our council. He educated and entertained us with his lectures and publications. An author, historian, scholar, journalist and businessman, he was great fun to be with and we will miss him. Neil was a prolific writer on Blackheath and Greenwich history.

MARY MILLS • GREENWICH INDUSTRIAL HISTORY SOCIETY

We were very sorry to learn of the death of Neil Rhind. He was THE Greenwich Historian - with a number of important and closely researched books on Blackheath - and a lot else. Personally, I met him in 1969 and he was always helpful and supportive. He gave several talks to the Society over the years. I am sure there will be major tributes from many people from the many organisations he worked with closely.



## NEIL RHIND TIMELINE - ACHIEVEMENTS GALORE

Editor's note: Here is a slightly edited version of the current Wikipedia entry about Neil which sums up his many achievements.

Neil Rhind was an English journalist, writer and an authority on the social and historical development of Blackheath and surrounding areas of south-east London.

He was awarded an MBE in the 1999 New Year Honours for services to the preservation of the historical character of Blackheath and was elected a Fellow of the Society of Antiquaries of London in June 2005.

In January 2011 he was appointed Honorary Fellow of Goldsmiths College for his work in the conservation and historical research of south-east London.

He lived most of his life in Blackheath and was the youngest of four siblings born to Doris Pamela and William Alastair, a naval officer.

During World War II, Rhind was evacuated and separated from some of his siblings for a time and he returned to Blackheath in 1951.

Educated at St Marylebone Grammar School, he married Elizabeth on 3 September 1960 and they had two children who pre-deceased him. From 1957 to 1959, Rhind served in RAF air traffic control, mainly at Uxbridge. He worked firstly as a librarian before joining the Odham Newnes Press where he was the Packaging Review Yearbook editor.

From 1963 he was assistant and then managing editor of the Good Food Guide. In 1967 he became a freelance writer, working as press officer for the Consumers' Association and the Greenwich Theatre during and following its rebuilding and reopening.

In 1969 he became press officer of the Blackheath Society. Prompted by



The photograph shows Neil at Buckingham Palace in February 1999 after he received his MBE

fierce local opposition to the Greater London Development Plan (London Ringways) and its adverse effect on Blackheath, Rhind became involved in documenting and protecting the social and architectural history of his home district.

In 1971 he joined the Greenwich and Lewisham Antiquarian Society (renamed the Greenwich Historical Society in 1991) and was elected to its council in 1973. He succeeded Sir Leslie Monson as president in 1982, in turn being succeeded by Sir Robert Somerville in 1984. He gave two presidential addresses - The Cator Estate and Blackheath: Some Sporting

Myths, and Thoughts on Jack the Ripper, the Blackheath Connection.

Rhind joined the Blackheath Society committee in 1974 and succeeded Ken Bound as chairman in September 1993, resigning in May 1998. He collated an archive collection of over 15,000 images of Blackheath, which are being digitised and made available online by the Society, and in 2016 he was appointed its President.

Rhind was a long-standing member of the Lewisham Local History Council (an advisory group set up by Lewisham Council) and a member of the Greenwich Industrial History Society and Lewisham Local History Society.

He was chairman of the Blackheath Schools of Art and Music Trust, founder of the Friends of Ranger's House, an honorary life member of the Westcombe Society and a past chairman of the London Borough of Lewisham Conservation Advisory Committee. He was also a leading contributor to the Blackheath Conservation Area Appraisal sent to Lewisham Council in 2007.

Rhind was director and secretary of the Blackheath Preservation Trust (BPT) from October 1972 to May 2001. This was set up in 1938 to combat the demolition and destruction of buildings of architectural and historic merit.

As secretary, he was involved in work relating to the Blackheath Art Club, Blackheath Railway Station (Chapman House), Brigade House, Brooklands House, The Cedars, Eagle House in Lewisham, Martin House, Park Hall, Poplar Cottage, Vanbrugh Castle, the Westcombe Woodlands and Blackheath Halls.

In 1977 the BPT bought the Halls, then threatened with demolition by developers. It retained the freehold until this was passed to Trinity Laban Conservatoire of Music. His interest in the preservation trust movement led to a time as an advisor to the Vivat Trust.

Rhind was a supporter of NOGOE (No to Greenwich Olympic Equestrian Events) in 2012, which organised ultimately unsuccessful opposition to the use of an area of Blackheath just outside the Greenwich Park gates, known as Circus Field, for the Olympic equestrian events.

Campaigners claimed that it would be unlawful for the London Borough of Greenwich to give planning permission for London to use the land because the enclosure of any part of the Heath, including Circus Field, would be contrary to the Metropolitan Commons Act 1866, which established the concept of metropolitan commons being available at all times for the benefit of members of the public. A NOGOE petition gathered over 12,000 signatures but Greenwich rejected the argument.

Drawing on his research, Rhind led numerous walks in the Blackheath area, describing buildings of

## NEIL'S LEGACY

The Society will update members as soon as possible regarding arrangements in respect of Neil's passing.

We will be discussing in the coming weeks how best to celebrate collectively his life and his contribution to Blackheath.

We will have a considerable responsibility, as the custodian of Neil's enormous collection and output, to ensure that his work is made accessible for the future.

And we will also have a responsibility to ensure that Neil's unfinished works are completed and made accessible. We will advise on plans for this major task, and what help we will need, in due course.

architectural or historical interest, and gave many talks on local history.

Rhind wrote many books, starting in 1968 with *The Consumer Wakes Up*, *Make Me Understand Pregnancy and Childbirth* and *The Greenwich Theatre Book* in 1969.

His output then mainly focused on subjects related to Blackheath, including his three volumes on *Blackheath Village & Environs*.

Further local books included *The Heath*, *A Fair Estate*, *Walking the Heath* and *Walking the Village* (both with Roger Mashall), *Montague House* and the *Pagoda* (with Philip Cooper) and *Greenwich Revealed* with Julian Watson.

Evening News journalist Felix Barker, who wrote *Guardians of the Heath* to mark the Blackheath Society's 70th anniversary, said this at the time:

**“REALLY, OF COURSE, IT IS IMPERTINENCE FOR ANYONE EXCEPT THE OMNISCIENT NEIL RHIND TO WRITE ABOUT BLACKHEATH.”**



## NEW ART AND FOOD SHOPS ARRIVE IN BLACKHEATH

If you are thinking of some home improvements this spring there are two new businesses in Blackheath you may like to visit.



**Clarendon Fine Art** on Tranquil Vale (showroom shown above) brings a wide range of art to Blackheath. Area manager Hannah Wilce told the *Newsletter*: "I love the village feel of Blackheath and believe that we can help residents build up their art portfolio".

They stock well-known contemporary artists as well as 20th century masters, such as Picasso and Lowry, and they also have emerging artists to be discovered. The company includes a department which checks the provenance of all the pieces and their condition.

Blackheath manager Ryan Walsh said he would invite all Society members to a launch party to be held in March, before the *Newsletter* went to press.



If you are looking for a complete home makeover, you may find yourself at **Treowe** interiors in Brigade Street

(bottom left). This is owner Louise Fitoussi-Findlay's first store and she hopes to open more in London.

The shop offers inspiration, ideas and product samples. There are also bookable design sessions for £300, either in store or at home, to bring your ideas to life. The interior design and build service could be for a room or an entire home. Living room makeovers are popular, as are a new bespoke kitchen or bathroom.



In the food sector **Prosecco** on Royal Parade is a welcome new addition to the village offering a full Italian menu and wines selection. Owners Eddy and Nina Ertan have always loved Italian food and, inspired by San Lorenzo in Knightsbridge, they say they want to create the Italian, family-run vibe here in Blackheath.

They offer white and rose Prosecco wines, an organic variety from Villa Sandi in the heart of the Veneto and a selection of wines compiled by wine manager Antonio (on the left above with Eddy). The menu features fresh pasta, spaghetti pescatore, home-made pizzas and daily specials. *Prosecco* is offering *Blackheath Society members a 25% price reduction during April. Just quote the code BS25% when you book on 0208 318 4200.*

Arlene King set up **oursommelier.com** in 2013 and it now operates from offices in the Workers League at 44-50 Royal Parade Mews in Blackheath. It sells wines and wine gifts online and provides bespoke sommelier and wine-tasting services to private and corporate clients. Blackheath Society members are offered a 15% discount. Their phone number is 0208 050 4601.

## JOHN STUART MILL BLUE PLAQUE COMING TO BLACKHEATH

A blue plaque in memory of the 19th century philosopher John Stuart Mill is due to be placed this summer on the Cator Estate house where he lived for 21 years.

From 1852 he stayed at 113 Blackheath Park. The current owners have gained listed building consent, but this will not be an official English Heritage plaque as two of these already exist for him in Kensington Square and Queen Anne's Gate.

The plaque will be made by *Signs of the Times*, a small firm specialising in casting bespoke signs which is based in Bedfordshire. The idea of memorial tablets in London was first proposed by William Ewart MP in the House of Commons in 1863 and the first one was erected for the poet Lord Byron in 1867.

The Blackheath building is now divided into six flats and is Grade II listed. Mill (1806-1873) wrote perhaps his most famous work *On Liberty* there, published in 1859.

He was also an MP who championed the suffragette cause, presenting

Below is an 1873 *Vanity Fair* caricature of Mill called *A Feminine Philosopher* and on the right is the front of the house in Blackheath Park, marked with a blue spot indicating where the plaque will be placed.



the first petition to parliament for votes for women, and he effectively launched the British Women's Suffrage Campaign.

Owner Francesca Martinato told the *Newsletter* she hopes that the historian and expert on women's suffrage, Dr Ann Dingsdale, will

speak at the unveiling, which is due to take place in June or July.

She added: "In 2012 we sent a detailed proposal to English Heritage to consider the possibility of erecting a blue plaque but sadly it was rejected twice because of their strict rules."

### BLACKHEATH AND GREENWICH HERALD

August 1977

#### OWNERS SEEK TO DEMOLISH CONCERT HALL

Mr. John Cator has applied to Greenwich Council for permission to demolish Blackheath's 83-year-old Concert Hall in Lee Road.

The hall is owned by the Cator Estate. The application for "listed building consent" to pull down the building came as a shock to the group of Blackheath people trying to save it for the village.

Since last May they have been investigating fund raising possibilities with a view to possibly buying and restoring the now deserted building. The Concert Hall is within the Blackheath conservation area and is also included in Greenwich Council's list of buildings of local architectural or historic interest.

Mr. Cator made the application under the 1971 Town and

Country Planning Act. The ad hoc committee to save the Concert Hall for the village was formed last May at a public meeting. In addition to investigating fund raising possibilities, it was also charged with drawing up proposals for possible uses for the hall.

The committee chairman is Mr. Neil Rhind, the author and local historian. The Vice Chairman is Mrs. Janet Harland.

The hall has stood empty since the departure last year of civil servants of the Department of Health and Social Security.

Suggestions put forward for its use include turning it into a community centre for the village, using it as practice rooms for the Royal Philharmonic, transforming it into a conference centre and equipping it for indoor sports or a library.



## COUNCIL WINS CONTENTIOUS RICHMOUNT GARDENS VOTE

Your Planning Group has had a busy three months since our last report.

The main highlight is Richmount Gardens. As reported previously we, and local residents, were very strongly opposed to the plan by Greenwich Builds, submitted a year ago, to build seven houses on the green space in a conservation area, removing its currently empty community centre building. We opposed this on the principle of what was proposed and the poor quality of the scheme, which attracted over 100 objections.

It is a tribute to the strength and quality of opposition that the developer, somewhat unexpectedly, submitted a revised scheme in February, envisaging a slightly smaller development of six houses and obliterating rather less green space. The site is seen below right.



We, and 64 others, still opposed this very strongly. Our analysis shows this will be the first time Greenwich Builds utilises green space in a conservation area, as opposed to the 40 odd projects using brownfield space, a concept we fully support. This would create a dire precedent for similar green spaces in Greenwich.

The new scheme still contravenes many planning policies, will cause significant harm to the conservation area and the community, and is weak on the fate of the precious William Mitchell mural in the Centre.

The plans were finally reviewed by the Greenwich planning board on March 19. In a marathon three-hour meeting, the Chair exceptionally allowed eight residents, including us, to present objections, in a very powerful performance. There was considerable unease in the committee about the harm to the community and conservation area from the loss of the community centre and open space, and the credibility of the alternatives offered.

However, council speakers weighed in heavily on the huge housing shortage in Greenwich, including a four-year waiting list for three-bed social housing homes, asserting that the delivery of six houses would more than offset the acknowledged harm.

It was extremely disappointing our local councillors felt unable to speak to support the residents. And, when it came to the vote, only two others supported the objectors, resulting in a 3-2 victory for the Council.

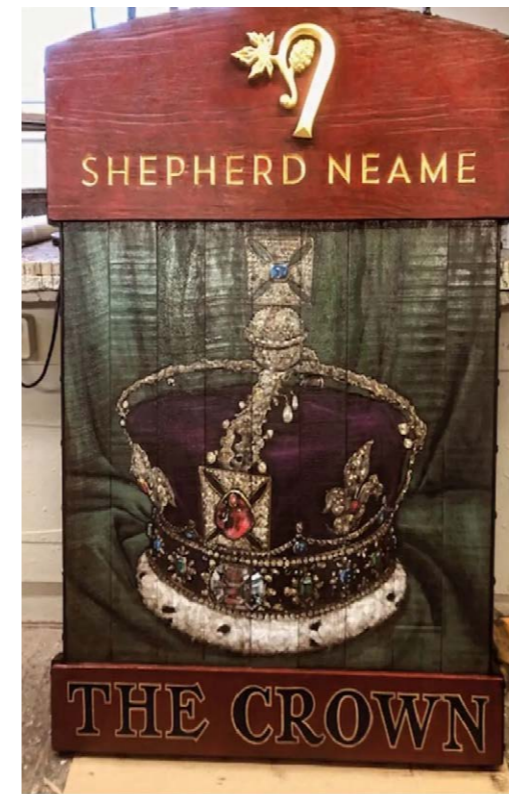
We await progress on the important scheme to relocate the Bowls Club in Brooklands Park. It plans to relocate from its Brooklands Park site, which would be redeveloped, to the end of Blackheath Park. The new site is pictured below left in an artist's impression. Following a refusal of its application in 2018 and an appeal, it has now submitted a revised plan.

We are sympathetic to the Club's overall approach. In our submission, apart from seeking clarity on a major missing detail, we requested officers to be quite sure any development, building as it would on community open space, would not create a precedent for such an approach to build on such designated land elsewhere.

In terms of smaller-scale developments we can be very satisfied with our results. We successfully opposed schemes we felt were insensitive in a number of areas, such as Foxes Dale and Morden Road. We are pleased that, following dialogue with officers, other opposed schemes were approved with amendments.

The proposed Neighbourhood Plan for Lee was approved by a community vote and is now in force. It offers welcome additional protection for the Lee area. Since this extends across the A20 and includes, for example, the Quaggy Fields area, it offers additional restrictions on what might be done there in future.

The Planning Group's usual annual review for 2023 shows that we scrutinised over 700 applications in Greenwich and Lewisham, of which 264 were for trees. We intervened in 49 cases, with considerable success, including the examples mentioned above of working in collaboration with planning officers, as well as enforcement issues. It is again very pleasing that we were able to devote so much effort to our trees.



The Crown pub reopened in the Village in February after a seven-week refurbishment costing £750,000, with a distinctly royal flavour. Here you can see its new swing pub sign. The restaurant upstairs has been named the King Charles III and on the wall outside stands a quirky soldier motif of an off-duty royal sentry

enjoying a pint by local artist James Titcher (seen above). Jonathan Neame, chief executive of the pub's owners, the Shepherd Neame brewery, generously presented the Society with a £1,000 cheque which will be used for the Village Christmas lights.

## TRAINS TUNNEL CLOSURE & NEW LTNS

The trains link between Blackheath and Charlton will be closed for 10 weeks from the start of June until August 11 as part of a £10 million project to repair a leaky 175-year-old tunnel.

During that period the Cannon Street to Dartford service via Woolwich will be diverted via the Greenwich line. The hourly off-peak service from Blackheath will then be reduced to two trains to Cannon Street (currently four), two to Victoria and one to Charing Cross.

The Society is continuing its campaign for more direct Charing Cross services to be reinstated. The June 2024 timetable will not bring many changes, but it should have better spaced trains and improved journey times. The Victoria to Dartford trains will be extended to Gravesend and late evening services on Saturdays will run from Charing Cross rather than Cannon Street.

In road news, Greenwich Council has confirmed plans for new Low Traffic Neighbourhoods on both sides of Greenwich Park for a trial period lasting 18 months, starting this summer. The experiment will operate on weekdays between 7-10am and 3-7pm. But this has been challenged by some councillors and a decision will now be referred to a Council committee after the May 2 London mayoral elections.

Full details are on the *Greenwich Wire* website at [www.greenwichwire.co.uk](http://www.greenwichwire.co.uk). Scroll down to "Rush-hour LTN to curb traffic in Greenwich and Blackheath". The Society will be keeping a close eye on the impact this experiment will have on Blackheath and the surrounding areas and we will liaise with our colleagues in other local amenity Societies.

## SOCIETY AGM

The Society's 2024 Annual General Meeting will be held on Wednesday 12 June at 7pm for 7.30pm at St Mary's Church Hall, Cresswell Park, SE3 9RD. The formal notice and annual report will be circulated in May in advance of the AGM, but members are invited to let the Secretary know if they have any resolutions they wish to be put to the meeting, or if they would like to put themselves forward for election as a Trustee. A copy of our constitution, which includes the rules for AGMs and Trustee appointments, is available on the Society's website.



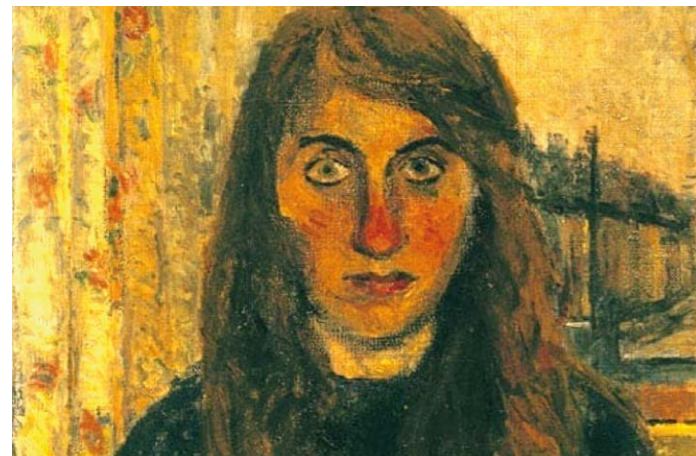
## TRIPS, LECTURES & VISITS PACK BUSY EVENTS SCHEDULE

For Events that require booking, the link provided will take you directly to the booking page on Eventbrite and show further details.

**WEDNESDAY 24 APRIL • ARCHITECTURE GROUP VISIT: DAY TRIP TO BRIGHTON** Full details are on the Society's website. We travel independently, meeting at Brighton station at 11 am, and will visit The Regency Town House at 13 Brunswick Square. This is a Grade I listed terraced home being developed as a heritage centre and museum, with a focus on the local architecture and social history between the 1780s and 1840s. In the afternoon we will see Embassy Court, an 11-storey block of flats on the Brighton seafront designed by Wells Coates and completed in 1935. It is among the most outstanding examples of pre-war modernism in the UK and has Grade II listed status. Tickets at £20 available from Eventbrite and this link will take you directly to the booking page: [www.eventbrite.co.uk/e/blackheath-society-architectural-group-day-visit-to-brighton-tickets-837439322557?aff=oddtcreator](http://www.eventbrite.co.uk/e/blackheath-society-architectural-group-day-visit-to-brighton-tickets-837439322557?aff=oddtcreator)

**TUESDAY 30 APRIL, 7 FOR 7.30PM • TALK: JEAN COOKE RA. MYSTERIOUS BLACKHEATH ARTIST "I NEVER CRY AND I NEVER LAUGH"**

Join us for a talk on the enigmatic local artist Jean Cooke (*seen below*) by art historian and author Frances Borzello at Blackheath High School, Wemyss Road. The exhibition last year of Jean's garden paintings at the Garden Museum was visited by many members. Frances has written several books on connections between art and life, including *The Naked Nude*, a study of the new face of contemporary nudes, and *Seeing Ourselves*, a history of women artists' self-portraits. Her book *A World of our Own*, out this autumn, depicts how women artists managed to work in a man's world. The event is organised in partnership with Blackheath High School as Jean and her daughter are alumnae and they lived in Blackheath. Tickets at £15 include wine and canapes and are available via this link: [www.eventbrite.co.uk/e/jean-cooke-ra-mysterious-blackheath-artist-i-never-cry-and-i-never-laugh-tickets-860982701437](http://www.eventbrite.co.uk/e/jean-cooke-ra-mysterious-blackheath-artist-i-never-cry-and-i-never-laugh-tickets-860982701437)



**TUESDAY 14 MAY, 7 FOR 7.30PM • ARCHITECTURAL GROUP ANNUAL LECTURE ON: 50 WORDS FOR RE-USE** at St Michael's church, Pond Road, Blackheath. The Architecture Group programme of visits this year has focused on the theme of Re-use and we are delighted to have Professor Graeme Booker (*seen left*) speaking. He is the head of Interior Design at the Royal College of Art's School of Architecture. In 2021 he published *50/50 WORDS FOR RE-USE - A Manifesto*. This was his 15th book on the histories and theories of inside spaces, many of which focus on the re-use of existing artefacts, buildings and cities. He is a provocative and inspiring educator and public speaker. See our website for more details. Drinks will be served and copies of the book will be available. Tickets at £15 from Eventbrite on [www.eventbrite.co.uk/e/blackheath-society-architectural-group-annual-lecture-re-use-tickets-861516728727?aff=oddtcreator](http://www.eventbrite.co.uk/e/blackheath-society-architectural-group-annual-lecture-re-use-tickets-861516728727?aff=oddtcreator)

Architecture. In 2021 he published *50/50 WORDS FOR RE-USE - A Manifesto*. This was his 15th book on the histories and theories of inside spaces, many of which focus on the re-use of existing artefacts, buildings and cities. He is a provocative and inspiring educator and public speaker. See our website for more details. Drinks will be served and copies of the book will be available. Tickets at £15 from Eventbrite on [www.eventbrite.co.uk/e/blackheath-society-architectural-group-annual-lecture-re-use-tickets-861516728727?aff=oddtcreator](http://www.eventbrite.co.uk/e/blackheath-society-architectural-group-annual-lecture-re-use-tickets-861516728727?aff=oddtcreator)

**WEDNESDAY 15 MAY, 12.30PM • MEET & EAT: THE PRINCESS OF WALES PUB** Meet other members for an informal lunchtime drink, food and chat. There is no need to book.



**MONDAY 20 MAY, 5PM • WALK & TALK: THE PUBS OF MAIDENSTONE HILL** Join David Whittaker who will be looking at the Maidenstone Hill area of Greenwich and the dozen public houses that have disappeared there over the years in a very small locality - mostly during the 20th century - and none was replaced. We will learn about the individuals

and organisations who used these pubs and their role in the community. The effect of changing licensing laws, how problems from alcohol consumption were dealt with, the influence of the temperance movement and why the pubs closed also feature. We meet at The Richard I pub in Royal Hill, Greenwich, (*seen above circa 1900*), where they still serve a good pint. David will give a short introduction and then take the group round the area. Tickets at £5 via the Eventbrite link: [www.eventbrite.co.uk/e/blackheath-society-walk-talk-the-disappearing-pubs-of-maidenstone-hill-tickets-861467290857?aff=oddtcreator](http://www.eventbrite.co.uk/e/blackheath-society-walk-talk-the-disappearing-pubs-of-maidenstone-hill-tickets-861467290857?aff=oddtcreator)

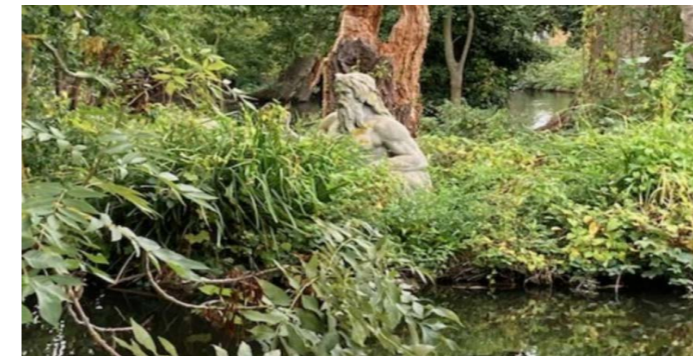
**THURSDAY 23 MAY • ARCHITECTURAL GROUP VISIT: THE MUSE, BERE ARCHITECTS** - Details to be advised.



**MONDAY 17 JUNE AT 10.30 • WALK & TALK: LITERARY WALK FROM BOND STREET TO BAKER STREET** Join Society member Robert Maurice-Williams on a two-mile literary trail from Bond Street and through Marylebone and Regent's Park to Baker Street. We will look at blue plaques and the residences of well-known people, including Elizabeth Barrett Browning (*left*),

Boswell, Conan Doyle, HG Wells, Wilkie Collins and Edward Gibbon. We meet outside Bond Street tube station on the south side of Oxford Street at the entrance to the HMV shop. Tickets £5 via Eventbrite at [www.eventbrite.co.uk/e/blackheath-society-walk-talk-literary-walk-from-bond-st-to-baker-st-tickets-861457000077?aff=oddtcreator](http://www.eventbrite.co.uk/e/blackheath-society-walk-talk-literary-walk-from-bond-st-to-baker-st-tickets-861457000077?aff=oddtcreator)

**WEDNESDAY 3 JULY AT 10 AM • WALK & TALK: A STROLL AROUND BLACKHEATH** Join other members for a gentle stroll led by Robin Firminger. The route will include the colourful Bennett Park, Blackheath Park, The Ganges pond statue (*seen below*), Nathaniel Hawthorne's House and the Paragon. We finish on Montpelier Row and Robin will have illustrations and stories to tell along the way. We meet by the Blackheath Society noticeboard at Blackheath Station next to its ticket office. Tickets £5 via Eventbrite on [www.eventbrite.co.uk/e/blackheath-society-walk-talk-a-stroll-round-blackheath-tickets-861474813357?aff=oddtcreator](http://www.eventbrite.co.uk/e/blackheath-society-walk-talk-a-stroll-round-blackheath-tickets-861474813357?aff=oddtcreator)



**THURSDAY 25 JULY, 12:30 • MEET & EAT: PRINCESS OF WALES PUB** Get to know other members, enjoy an informal lunchtime drink and a chat. No booking needed.

**SATURDAY 24 AUGUST • ANNUAL CRICKET MATCH BETWEEN THE BLACKHEATH AND GREENWICH SOCIETIES IN GREENWICH PARK** Full details to be announced later.

## NEW GREENWICH PARK CAFE



A new café in honour of the first black Briton to vote in an election has opened in Greenwich Park.

The Ignatius Sancho Café in Vanbrugh Yard, a newly created landscaped public space in the southeast corner of the park (*seen above*), was previously a private, residential lodge, and this has now been transformed from a concrete yard.

Royal Parks funded the project as part of its *Greenwich Park Revealed* scheme, with the the help of grants from the The National Lottery's Heritage and Community Funds. The two-storey café has accessible toilets, a volunteer hub and a kitchen garden.

Catering will be provided by Benugo, which also operates the Pavilion Café and kiosks in Greenwich Park. The new café is open daily from 8am - 6pm.

Charles Ignatius Sancho was a British abolitionist, writer and composer who arrived on a slave ship from New Granada aged about two in 1731. He grew up enslaved in a family in Greenwich and was then educated and employed by the Montagu family. He developed artistic talents, composing music, acting and writing plays. He also became a shopkeeper and gained celebrity in Georgian London.

### GUIDED WALKING TOUR: BLACKHEATH SPAN ESTATES

Ana Sutherland, who leads the Society's architecture group, has been commissioned by Open City, a charity dedicated to making neighbourhoods more accessible, to write a guided walking tour of the Blackheath Span estates designed by Eric Lyons.

This is available for £8 as part of its collection of printed tours on its website at [www.shop.open-city.org.uk/collections/printed-tours/products/individual-pocket-london?variant=44730462339295](http://www.shop.open-city.org.uk/collections/printed-tours/products/individual-pocket-london?variant=44730462339295)





# CHOCOLATE HOUSE EXHIBITION ARRIVES IN GREENWICH



A Chocolate House exhibition at the Old Royal Naval College in Greenwich features the history of chocolate drinking, based on Enlightenment Era chocolate houses.

The 18th century was hot chocolate's heyday. Visitors will step back in time to discover the drink's key role in the revival of Greenwich and enjoy a recreation of Grace and Thomas Tosier's royal Chocolate House.

From its origins in central America to becoming the mark of sophistication for London's Enlightenment era, the show traces the journey of chocolate and its impact on Greenwich Georgian society. It features the complex history of chocolate and its surprising role at the heart of new cultural and scientific conversations at the time.

The Tosier Chocolate House was once located on the edge of Blackheath in what became known as Chocolate Row and was a social space for leading figures of the day. The show reveals the architects, astronomers, scientists and chocolate makers who made Greenwich a centre of innovation.

An audio and visual display depicts Grace Tosier, who ran this social hub, and her husband Thomas who ran the King George I chocolate kitchen at Hampton Court.

A series of events complements the exhibition, which runs until November 3, including a Choc-oLate this summer and a series of hands-on chocolate themed and making workshops. Tickets, included with the Painted Hall entry, are £16.50 and children go free.

Above is a coffee and chocolate house of the 1690s.

## WELCOME TO OUR NEW MEMBERS

Annette Antill  
Emma Bailey  
Angus Bearn  
Arabella Budd  
Quentin Clare  
Marina Collins

John Coverdale  
Will Downey  
Mitchell Dunlap  
Nichola Elvy  
Anja Funston  
Sylvia Jennings

Christopher Jones &  
Rosie Steele  
Arlene King  
Sarah Maidens  
Sharon Mason  
Sarah McMichael

Tanuj Modasia-Shah  
Magdalene Moorey  
Richard Perks  
Helen Warner  
Mark Webb

© April 2024 The Blackheath Society.

A Charitable Incorporated Organisation - Registered Charity number 1196292. Member of the London Forum of Amenity Societies.

CHAIR: Paul Watts VICE CHAIR: Helen Reeves TREASURER: Andrew Westbrook  
SECRETARY: Sacha Bright EDITOR: John Bartram DESIGNER: Pippa Stanton

COMMITTEE MEMBERS: John Bartram, Allan Griffin, Sarah Mansfield, Nick Patton, Nicola Peers, Helen Reeves, John Schofield, Howard Shields, Diane Summers, Ana Sutherland, David Walker, Paul Watts, Andrew Westbrook, Liz Wright

The Old Bakehouse  
11 Blackheath Village  
London, SE3 9LA

THE  
BLACKHEATH  
SOCIETY

020 8297 1937  
office@blackheath.org  
www.blackheath.org