



NEWSLETTER ■ WINTER 2018

NEW SHOPS OPEN IN REVIVED BLACKHEATH VILLAGE

Blackheath seems to be bucking the national trend for high street closures with two new restaurants, an art gallery, a jewellers, a solicitor and another estate agent opening in the Village this autumn.

The much-loved *Selectric* hardware store has stayed with us and moved on Village day to larger premises in the former Costcutter site next to the Conservatoire, which had been empty for nearly two years.

The existing *Selectric* premises in Tranquil Vale will be redeveloped into offices and a smaller retail unit, with a new tenant expected in the front area of the shop.

The new restaurants are *Khan's* on Montpelier Vale and *Copper & Ink*, which is opening with a soft launch

in early December. It is owned and run by the 2015 MasterChef finalist Tony Rodd and his partner, gluten-free baker Becky Cumming.



The notice above, with Selwyn Court reflected opposite in the background, announces its arrival.

Watches and Diamonds has replaced the former picture framing shop on Royal Parade, where joint owner Jay Stevens told the *Newsletter* they would provide a full range of jewellery.

Joanne Parker has opened the *JP Art Gallery* as a pop-up in Montpelier Vale in the double-fronted former Fatface site. She has a monthly lease but hopes to remain there if it thrives, and is looking for other businesses to share the space.

She has talked to the owner of the former picture framer's and will also approach Fergus Noone, the photographer who closed his nearby shop, which has now been taken by *Alcomax*, the most recent estate agent to arrive in the Village.

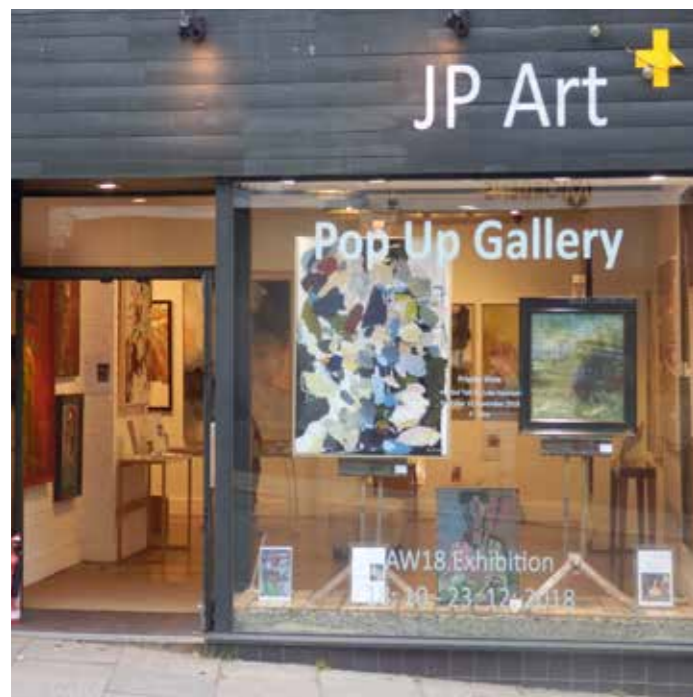
Joanne told the *Newsletter*: "We are interested to find local

HIGHLIGHTS

Station car park for sale
Page 3

Village cinema starts
Page 6

New Society events
Page 7



Two new arrivals in Blackheath Village are the art gallery in Montpelier Vale and the jewellers on Royal Parade

organisations that may benefit from holding events here in combination with fine art. Our aim is to create a beautiful gallery which is financially sustainable in the long term.”

The solicitors Grant Saw also moved its main office from Greenwich to Blackheath in August.

In the spring we reported that a number of shops had been forced to close because of higher rents and business rates.

At press time, five premises remained closed - the former delicatessen next to Tziganos, Jennings betting shop, Rockit hairdressers, the Cau restaurant (which has closed all its national outlets) and JoJoMamanBebe, which says it closed due to flooding but hopes to reopen soon.

We held a panel discussion on Village prospects at our June AGM and have now set up a sub-group of committee members to discuss the next steps.

The group has identified the following key issues that need attention: the mix of businesses, public signage and street furniture, cleanliness, planting, traffic, parking, air quality and the look and feel of the Village.

On shops it highlighted a tendency for chains to push out independent businesses, poor access for deliveries, too little short-stay or free parking, and rubbish removal.

Among the opportunities, it has suggested introducing half-hour free parking to pull in shoppers, loyalty and discount schemes and a “Try Blackheath First” campaign to encourage people to shop locally.

Challenges also include congestion in the Village and pressure for more restaurants, bars and hairdressers.

This is just the beginning of the Society’s efforts to help improve the Village. Discussions will continue with shopkeepers and Lewisham and Greenwich Councils in the coming months and we will keep members informed of progress.

In his October budget Chancellor Philip Hammond announced a £675 million fund aimed at bolstering the country’s struggling high streets, with some rates relief for small businesses.

But the British Retail Consortium said shops were hit by a “perfect storm” of factors, with technology changing how people shop, rising public policy costs, softening demand, high rents and rates.

However, Blackheath remains an attractive proposition for businesses. As well as the recent arrivals, it has attracted several other outlets earlier this year.

These include two cafes - the Ivy and Madeleine’s on the Deli site near the station, the Oliver Bonas clothes shop and a new Waterstones

The bookshop manager Michael Perry said it was performing very well and keeping pace with the company’s expectations.

“We owe so much to the people of Blackheath and the very warm welcome they have given the shop since the day it opened,” he said.

In the past few years other new businesses that have moved to Blackheath include Farrow & Ball, John Lewis of Hungerford and Lordship Flooring in Brigade Street.

Blackheath also has four well-used charity shops - Oxfam, Save the Children, Cancer Research UK and Shelter. They benefit from an 80% reduction in business rates, making it easier operate commercially.

Any members wishing to contribute ideas or become involved in the sub-group’s work on the Village should contact the office.

NETWORK RAIL TO SELL BLACKHEATH STATION CAR PARK

Network Rail plans to sell the leasehold of the Blackheath station car park by next spring but has assured users that the space will remain a car park after the sale.

“This is to generate money to reinvest in the railway upgrade plan. It will help us fund much-needed improvements and enhancements without placing an extra burden on the taxpayer,” development director Steve Peggs said in a letter to the Blackheath Society.

He promised the new leaseholder would continue to operate the car park after the sale: “Users won’t notice major changes but car park season ticket holders are being advised that current tickets will become invalid following the sale and they will need to return them for a full refund for any remaining time before purchasing a new season ticket from the new operator.”

He said the car park will remain a location for school drop-offs, for the Sunday morning farmers’ market

(seen below) and during the London marathon. There would also be no closures or changes to the station or to the rail network.

“The site is being sold as a car park only and the new owner will not have permission to use it for any other purpose, such as a housing development. Network Rail will retain the freehold and operational access. The site will continue to operate as a car park and no planning consents for other developments exist.”



CONSERVATOIRE GRANT TO EXPAND COMMUNITY WORK

The Blackheath Conservatoire has won a grant of £40,000 from the Andrew Lloyd Webber Foundation to extend its work in Greenwich and Lewisham communities.

Principal John Keeley told the *Newsletter*: “This is wonderful news and a big vote of confidence in our vision for the next decade. We believe the arts can transform lives. This will enable us to bring our art, music and drama practice to communities in Greenwich and Lewisham that desperately need this support.”

Under the title Creative Futures, the money will be used to support projects such as:

- Developing creative learning for teachers and student Arts Champions in 14 schools in the Greenwich Community Schools Partnership.
- Work with the Tate Gallery on inter-disciplinary arts with autistic, deaf and other vulnerable groups.
- Musical reminiscence and inter-generational arts with Age Exchange, for people in care homes.
- Developing creative arts leaders for nursery and primary schools, working with the people who run the Conservatoire nursery and 35 other nurseries London-wide.

Please get in touch with him at john.keeley@conservatoire.org.uk if you would like to discuss ways of supporting the Conservatoire’s continued growth in outreach and to provide financial assistance to ensure arts and music education is available to all.

The grant is one of 16 totalling £270,690 awarded across the country to education and outreach projects in music, drama, dance and heritage.

The Foundation aims to break down barriers to participation in the arts and prioritises projects that engage young people and individuals from hard-to-reach and minority backgrounds.

Society appoints new Vice Chair

Following the appointment of Paul Watts as the Society’s new Chair in October, there were also changes to the Vice Chair role in November. The previous Vice Chairs Howard Shields and David Walker stood down and were replaced by Dame Helen Reeves, our former Chair.

The Society would like to thank Howard, who had been in this role since he stood down as Chair in October 2014, and David, who had been a Vice Chair since 2013, for their hard work in the role, and we are pleased that they are both remaining on the Management Committee.

SOCIETY PLANNING GROUP DEPENDS ON VOLUNTEERS



The Society needs more people to monitor planning in Lewisham and Greenwich.

Our planning effort is carried out by a small group of volunteers and, while some have professional experience, most are amateurs. Our common attribute is enthusiasm for preserving and enhancing Blackheath.

We would be happy to hear from any member who would be interested in joining this group, in particular, we would welcome a volunteer to look at issues concerning trees.

Our major current preoccupation continues to be developments around Blackheath, in Kidbrooke and Lewisham town centre.

KIDBROOKE VILLAGE

The previous Society *Newsletter* mentioned revised plans for a much more intense development of Kidbrooke Village West (the area east of Moorhead Way and next to the Huntsman site). We objected to these, believing they constitute overdevelopment and contribute little to solving real housing issues.

The Greenwich Planning Board disagreed, voting the changes through with relatively little challenge. This risks creating an unfortunate precedent.

Also covered in the last *Newsletter* was the consultation on a more dramatic increase in planned intensification for the Kidbrooke Station Square, which lies north of and across the road from Kidbrooke Station.

We submitted, and circulated widely to interested parties, a lengthy response covering our serious concerns about a relatively small site with multiple towers, including two of 22 and 24 storeys, poor

access across the railway and unaddressed concerns on issues like pollution – not to mention the impact of the towers on views across the Heath.

We now await the planning application and its response to our concerns.

LEWISHAM TOWN CENTRE

The next stage of the Gateway scheme for the town centre, with six tower blocks, was approved earlier this year, including one of 29 storeys which was reduced following objections to earlier plans.

After a consultation on details of the scheme, we welcome some changes such as plans for a cinema. But we continue to express concerns, particularly about some of the dark cladding materials being considered, and about a missed opportunity to create a proper usable community space in this huge complex.

The parallel Conington Road Tesco Car Park scheme, including its 34-storey tower *illustrated above*, is headed for appeal in 2019 following its rejection by the Lewisham Planning Committee.

Developers Meyer Homes have now submitted what appears to be an opportunistic repeat of their application, ahead of the appeal inquiry. The new application makes much of plans for a “Skyline Lounge” in the 34th storey.

Little has been done to address the objections that led to the earlier refusal - the lack of solid justification for the extreme height, the low element of affordable housing, inadequate addressing of issues surrounding Lewisham station and its access and poor consultation with the neighbours affected. We continue to object.

8 THE GLEBE

There was a mixed outcome to the public inquiry, after Lewisham’s rejection of plans to construct town houses in the garden of this 1840s villa.

It was very satisfying that the plans for the houses were refused, but the inspector allowed other plans for removal of trees and the garden wall to proceed (*see below*). Efforts now focus on ensuring that the owner proceeds with long overdue attention to this dilapidated villa.



MANY APPLICATIONS

In addition to dealing with these major developments, your group is continuously busy scrutinising dozens of applications a month involving proposals for individual sites, in Lewisham and Greenwich boroughs.

These include planned extensions, basements, dormer windows and tree removals. Our comments, which can be objections or simply suggestions, cover the scale, style and design, materials, window

and door positions and impacts on neighbouring properties and trees.

The applications also involve period and modern houses from the 18th to 21st centuries and mixes of style, all of which we welcome so long as they are proportionate and sensitive to the local surroundings.

We aim to support the work of the overloaded planning system in both boroughs and we are pleased to note that Lewisham and Greenwich officers by and large accept our views.

The planning effort is guided by extensive policy documentation, including the Supplementary Planning Documents which guide development in each borough and set parameters for projects to alter houses.

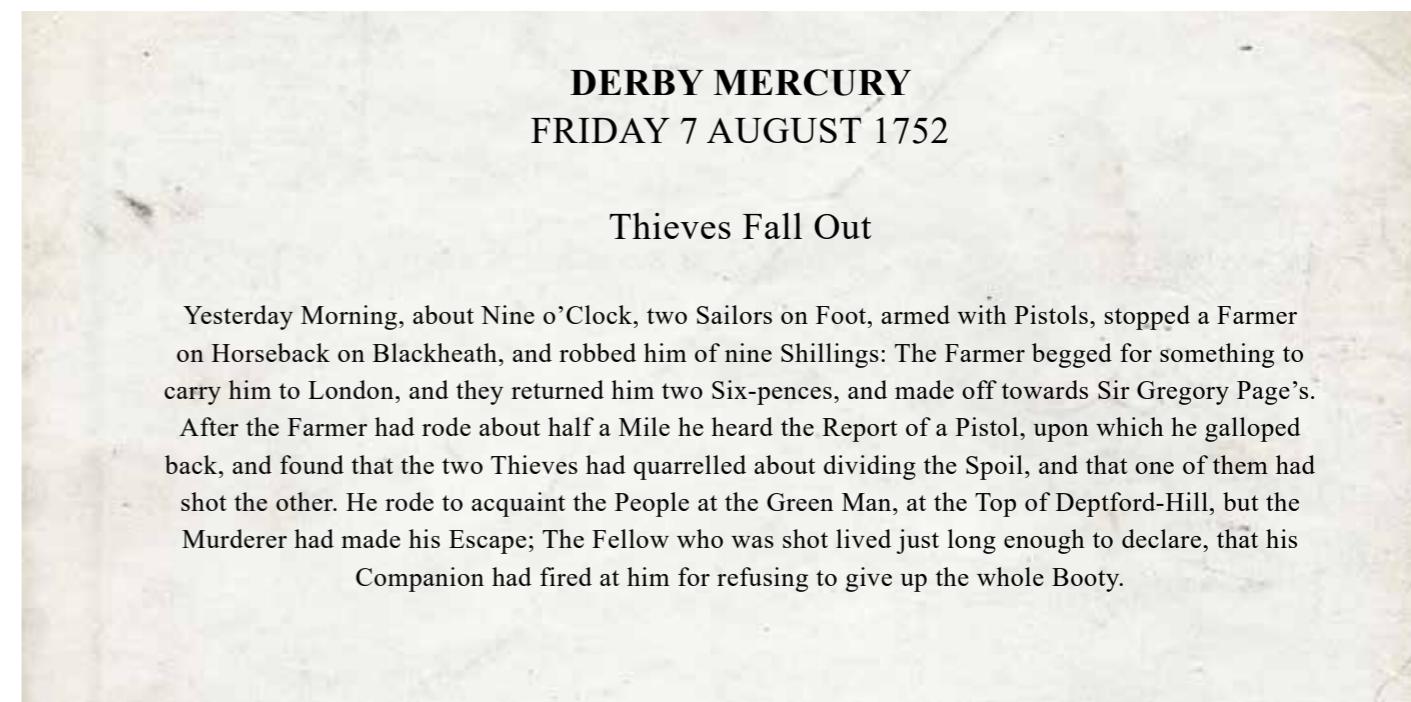
Greenwich and Lewisham have been consulting on updates to their policy guidelines and we take an active part in this lengthy process.

We are particularly keen to see clear guidance on basement conversion applications, so that applicants and council officers can be spared needless discussion.

We expect these new guidelines for both boroughs to be adopted in the New Year.

The planning group is setting up its own Society planning library of important documents and records to speed up and assist our work, which may be available for members in the future.

This will be a useful repository of planning guidelines and policy at national and local level, and of important cases and decisions in which we have been involved in the past.



LEWISHAM STATION PEAK-HOUR SYSTEM UNDER TRIAL

In our last *Newsletter* we reported on a new peak-hours one-way system at the station in response to overcrowding at busy times, especially around the barriers leading from the ticket office to platform 3.

Conflict is common when users moving between the DLR and platform 3 encounter those entering or leaving the station from platforms 3 and 4.

The scheme was introduced on 21 October and some disquiet was then expressed at the Lewisham Station Users Group (LSUG) public meeting, when people pressed for opening new exits and restoring the old one from platform 4, or simply adding extra gates.

In response, Southeastern's Area Manager Dan Morrison said the scheme would be withdrawn if it failed to alleviate problems, or made them worse. But it is continuing on a rolling four-week basis and no conclusions have yet been drawn.

Southeastern has staunchly resisted re-opening the old platform 4 exit and is not keen on opening new exits, which would cost more to staff and make passenger control more difficult.

In the 10 years up to March last year the number of entries and exits increased by 71% to 10.75 million and interchange use rose 47% to 3.8 million. These huge figures make Lewisham one of the busiest stations in the south east. Nearly 11.5 million people used the DLR station in 2016-17 and local bus services are also busy, making these figures even more significant.

For Network Rail, Lewisham is one of the nation's top 10 stations that will require action in the period up to 2025, and the Mayor of London sees it as one of four strategic hubs round inner London, with Stratford, Old Oak Common and Clapham.

New residential developments in central Lewisham have greatly increased pressure on the station's creaking infrastructure.

At least 2,600 new residential units have been completed over the last eight years and another 1,900 are in the pipeline.

But very few improvements have been made to the station beyond removing the old ticket office, opening up the old station building to help passenger flows and adding three more electronic gates.

Primary concerns include passenger overcrowding and congestion, the poor state of the platforms and increasing train delays. When the Bakerloo Line extension comes to Lewisham from 2028/29, numbers using the station are likely to rise dramatically.

Suggestions for a major makeover for the station involve a bridge to relieve pressure on the subways and widening and levelling the platforms, but a major rebuild could cost up to £242 million and is unlikely to happen for some years.

LSUG, whose website is www.lewishamstation.wordpress.com, is continuing to press for urgent short-term improvements and a major station rebuild well before the arrival of the Bakerloo Line.

VILLAGE CINEMA TO START IN JANUARY



Films will be shown each month in the recital room, tickets will cost £8 (£6 for concessions) and they will be sold via Blackheath Hall's website or at the box office. Exact times and dates will be announced later.

The cinema is being organized by a group of local residents – Lucy Chaple, Emma Gibson, Debbie Jarvis and Angela Smith-Morgan.

Lucy told the *Newsletter*: "We hope very much that the Village Cinema will be a popular and successful addition to the events being run at the recently re-furbished Blackheath Halls."

The Village Cinema has now been constituted as a not-for-profit charity and plans to start operating in January in partnership with Blackheath Halls.

The first season comprises *Sideways* on 24 January, *Phantom Thread* on 26 February and *Hidden Figures* on 21 March.

To celebrate its inaugural season, on 23 April it will feature one of *Call Me By Your Name*, *Dunkirk*, *Lady Bird* or *Crazy Rich Asian*. This film will be chosen by an audience vote and all performances start at 8pm.

For details check the cinema's Facebook page on <https://www.facebook.com/thevillagecinema> or the Halls' site at: www.blackheathhalls.com. You can email the organisers on Villagecinemablackheath@gmail.com.

SOCIETY ACTIVE WITH FIVE EVENTS IN THE NEW YEAR

WEDNESDAY 9 JANUARY

Society member John Causer, who has led several popular walks, will guide a Walk and Talk entitled: *Blackheath storyboards - A Walk on the North Side*.

The walk will pass the Agincourt, Park Gates and Vanburgh Pits boards on the north side of the Heath. Our storyboards are full of history, nature and illustrations of the past, but John will be adding much more. Come and see who lived amongst us and what famous events have taken place here.

There will be a coffee stop in Greenwich Park. Please let the office know if you plan to join us, so that we can send further details.



a maximum of 25 people, so please book your place through the office soon at £10 a ticket and we will send you more details.

WEDNESDAY 13 MARCH

Society members Paul and Liz Wright will lead a Walk and Talk on Wednesday 13 March concerning Victorian Greenwich which will reflect the local Victorian heritage which influences our lives today.

We meet at 1000 at the bandstand in Greenwich Park (*above*). There is no need to book but we would be grateful for a donation of £5 on joining the walk.

23 JANUARY & 12 FEBRUARY - MEET & EAT

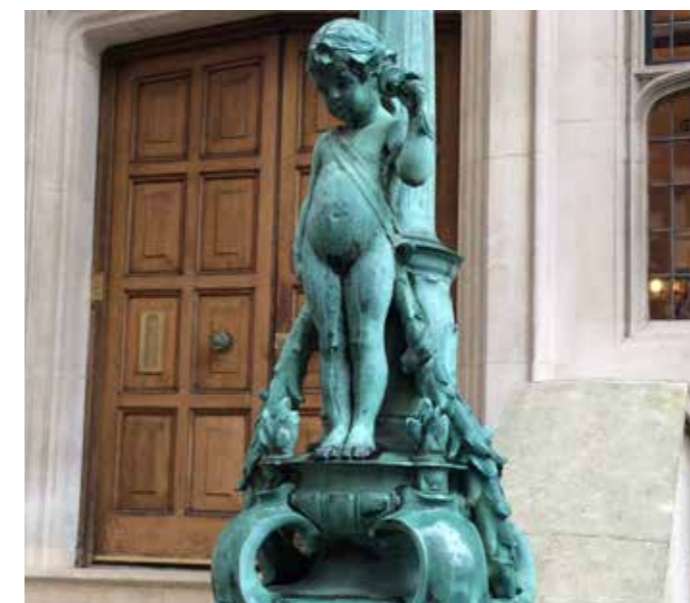
We are also holding two Meet and Eat events where you can join fellow members at the Hare and Billet pub for an informal drink and/or lunch.

Committee members Liz Wright and Helma Zebregs will be there from 1230 each day. These lunchtime meetings will take place on Wednesday 23 January and Tuesday 12 February and there is no need to book.

HEATH LOOKS CLEANER

An enthusiastic band of nearly 30 lovers of the Heath met on October 21 for our annual Clean Up Day to support Lewisham Council's contractors Glendale, and it was pleasing to see youngsters among our number.

It was also pleasant to observe that, despite the usual collection of paper, bottles, plastic and the occasional hub cap, the Heath seemed to be significantly cleaner this year. A letter of thanks was sent to Lewisham and Glendale staff who, a few weeks later, also had to contend with the aftermath of the fireworks display.



WEDNESDAY 6 FEBRUARY

The Society has organised a guided tour of Two Temple Place (*seen above*). This was the London office of the politician and publisher William Waldorf Astor, who also owned Hever Castle, Carlton Terrace and Cliveden House.

The property was built to his specifications and reflects many details of his life, interests and taste. It is a fascinating secular Gothic revival building which you may recognise from films and dramas made there.

These include *Downton Abbey*, *Bridget Jones*, *The Crown*, *The Edge of Reason*, *Made in Chelsea*, *The Royals*, *Silent Witness* and *Mr Selfridge*.

The tour will coincide with the annual exhibition, which this year features the eminent Victorian art critic John Ruskin, who was also a talented artist. We will visit the exhibition and there is a small cafe. We can only take

RARE PHOTOGRAPH OF MAZE HILL WAR MEMORIAL

Local men were remembered at a memorial service held at the Maze Hill Greenwich War Memorial on the commemoration weekend of the 100th anniversary of the end of World War I.

Our images collection recently added a rare photograph of the memorial (*seen below*) taken on 11 November 1922, when it was unveiled, and Harold Bolton Sewell laid the first wreath.



Sewell (1859-1941) lived at No 26 Crooms Hill and was an appropriate choice because he lost four sons in the Great War, and the last was Lt Cecil Harold Sewell, a tank commander killed in action and awarded a posthumous Victoria Cross.

Members of the Sewell family subsequently became supporters of the Society and the Blackheath Preservation Trust.

The Blackheath Proprietary School lists the names of 47 alumni who were killed during that conflict and hundreds more who served on the field or in some civilian capacity.

Historian John Kirby wrote in his *History of the Blackheath Proprietary School*: "The tank, the only major addition made by the Great War to the repertory of the instruments of military tactics, was conceived and put in the field by Major General Sir Ernest Dunlop Swinton (1858-1951)."

"It was first exploited on any considerable scale at Cambrai by Major-General Sir Hugh Jamieson Elles (1880-1945). Both men lived in Blackheath and were pupils at the Proprietary School for some part of their secondary education".

The Society was pleased to support the recent publication of Rob Powell's *Greenwich Roll of Honour 1914-1918*, which lists everyone from Greenwich killed in the Great War.

The booklet marks the 100th anniversary of the end of that conflict. Copies are available from Greenwich bookshops and the Warwick Leadlay Gallery at £5.

MAPPING THE CULTURAL LIFE OF BLACKHEATH

Recent months have produced a flurry of activity in our archive with a large number of new images introduced to the www.blackheatharchive.org website.

These cover the musical, dramatic and artistic life of the Village, featuring the Halls, the Conservatoire and the School of Art.

To mark the re-opening of Blackheath Halls after its refurbishment, the team has uploaded over 1,000 images illustrating the history of Blackheath Halls over the past 120 years.

Visitors can view the share certificates issued to local subscribers and the early building plans.

Images of performances from the 1900s to this century range from vocalist Margaret Cooper (*above*) in 1907 to Harry Lauder in 1909 and George Bernard Shaw who argued for a national theatre in 1911.



The Magistrate, a farce by the English playwright Sir Arthur Wing Pinero, was played there in 1896 by the Blackheath Dramatic club.

Much later came Nigel Kennedy, Willard White, Jools Holland, Jeremy Paxman and local author and poet Blake Morrison.

The Concert Hall was used for ladies' fencing classes in 1907 and as an indoor tennis court in the 1930s. And many may be unaware of the role played by the Halls as government offices during both world wars.

Seriously at risk of demolition for redevelopment in the 1970s, the Halls fell into disrepair before being rescued by the efforts of the Society

and Blackheath Preservation Trust in the 1980s.

A number of images in the archive show how perilously close the Halls then came to being knocked down.

Neil Rhind, now President of the Blackheath Society, was a pivotal figure in rescuing the Halls in the 1980s.

Music lovers can see the splendid work done by Society member Tom Butler, who produced advertising and publicity materials for the Halls for many years, particularly for the music appreciation classes taught by Matthew Taylor (*see story on page 11*).

We have added four galleries of his unassuming yet vital contributions to the continuing success of cultural life in Blackheath, *such as the poster below*, and there are links from many posters to class notes on the composers featured, written by organiser Lionel Lewis.

For the Conservatoire we have added 108 images on its contribution to the cultural life of Blackheath. This and the School of Art were, like the Halls, the inspiration of William Webster at the end of the 19th century.

We are particularly grateful to Chris Morton, Conservatoire admissions tutor, for tracing the history of the School of Art and identifying images featured in the Artists and Students gallery. He would be very pleased if anyone could contribute to this work.

VILLAGE DAY LIGHTS UP

The village came together again this year to celebrate turning on the Christmas lights on Village Day, organised by the Blackheath Society.

As a rainy morning turned into a mild afternoon, most traders laid on a wonderful trail of light through their window displays to the festive Christmas tree at the top of Tranquil Vale, *seen in the photograph below*.

The first Saturday in December was very busy in the Village, with music at the Crown, puppet shows at Mary's Living and Giving Shop, the film *Elf* shown for children at Age Exchange and surprise appearances of Father Christmas.

A full programme of family events also took place at Blackheath Halls, which celebrated their reopening after major refurbishment.

It was a festive occasion and many thanks to all who helped the day run smoothly, especially to DJB Property for their assistance in installing this year's Christmas Village festive lighting.

The lights came on gradually as the large crowd proceeded from the Halls to the Christmas tree, provided by Capitol Trees of Greenwich Park. After the speeches, the tree lights also sparkled.

In previous years our trusted volunteers turned the lights on but, due to a new Health and Safety decision by Lewisham Council, the lights had to be turned by a representative from its agents Skanska.



LEWISHAM HOLDS LOCAL DEMOCRACY REVIEW

Lewisham's Blackheath councillor Kevin Bonavia, the review Chair, writes: Our council is conducting the first comprehensive review of its local democracy in 16 years, during which our borough has seen much change, with a growing and younger population.

The last eight years of Government austerity has reduced the size of Lewisham Council by half. But we still make decisions on over 800 services that affect our lives, from refuse collection to school admissions, from planning policy to social care provision. A strong and healthy democracy means we can make better decisions in all these areas.

But most people take no active part in the democracy that is closest to them and less than 40% voted in this year's local elections. It is not just voting - decisions can be affected by lobbying and consulting the Council.

However, only a tiny proportion of the population tries to influence or shape change, and often it is usually the same individuals or groups who have a strong interest and experience of engaging with the Council.



So as part of its Local Democracy Review the Council is asking residents about how the Mayor and the Council could:

- Enhance openness and transparency: how do we make it easier for people to find out about what the Council does and why?
- Increase public involvement in Council decisions: how do we encourage people to influence decisions, from voting to making proposals and giving views?
- Promote effective decision making: how can we better ensure that we make timely and clear decisions that achieve the intended results?

Please visit the review's website at www.lewishamdemocracy.com to find out more. You can also fill in a questionnaire on your experiences and suggestions for change. It is open until December 31.

We are speaking to as many people as possible to find out their views by attending public events, such as local assemblies and community groups.

We are seeking collective viewpoints to see how the Council can improve its ways of engaging with different interests, so we are contacting and visiting a variety of organisations, including our schools, local voluntary services, older people's groups and amenity groups such as the Blackheath Society.

If you know of a local group or organisation that would like to participate in the review please email democracy@lewisham.gov.uk, or contact your local councillor to arrange this.

MONDAY MUSIC APPRECIATION GROUP MEETS IN HALLS

Lionel Lewis, the organiser of the Blackheath Music Appreciation Group, writes:

I would like to let you know about our group as we have been around for 25 years but there are many who still express surprise when they learn of our activities.

The group of up to 60 music lovers meets to hear illustrated lectures by Matthew Taylor, an established composer, conductor and a dab hand at the piano.

It started life as an evening class under the auspices of the Inner London Education Authority but Matthew has continued the lectures in the Blackheath Halls.

Each term is devoted to 10 lectures on the works of a particular composer or a group, or a subject with a connecting theme. Each week he talks about his theme, illustrates it on the piano and plays excerpts of music.

The lectures are held on Monday mornings at 1000 in the Recital Room, or at Charlton House if the Halls are closed, and last two hours including a break.

The subjects are chosen for people who like and appreciate classical music and want to know more. Lectures can be booked individually or as a series and you do not need musical training.

Society member Tom Butler has designed a series of posters for the group, which are on the Society's archive website at <https://www.blackheatharchive.org/p699315467>, and the poster for next series is opposite. For more information go to the music group's website at <http://blackheath-music.co.uk/>, or contact Lionel on ljl@lioneljlewis.org.uk.

The Bard comes to Blackheath is the next series with 11 lectures starting on 7 January. It will be a foray into the music inspired by the plays and poetry of Shakespeare, with music from different epochs, symphonies, tone poems, overtures, film music, opera and ballet.

The BARD comes to **BLACKHEATH**

Music Appreciation lectures

Monday mornings with Matthew Taylor at Blackheath Halls



This will be a foray into the music inspired by the plays and poetry of Shakespeare covering various of his plays, with music from different epochs, including symphonies, tone poems, overtures, incidental music, film music, opera and ballet. There is an A to Z of composers from Arne (*The Tempest*) to Zemlinsky (*Cymbeline*) with a myriad of others in between including Berlioz, Elgar, Handel, Haydn, Mendelssohn, Nicolai, Schumann, Sibelius, Richard Strauss, and Verdi for starters. It is to be a huge project and will consist of eleven instead of the usual ten lectures.

Please note: The two February lectures marked * will take place at Charlton House.



Above: The Chandos portrait of Shakespeare (National Portrait Gallery)
Poster design: Tom Butler

Mondays from 10.00 to 12.00 in the Recital Room Blackheath Halls:
January 7, 14, 21, 28
February 4*, 11*, 25
March 4, 11, 18, 25

Course fee: £105 or £11 per single lecture or try a taster for free.

For further details contact:
Lionel Lewis on 020 8297 1075
email: LJL@lioneljlewis.org.uk
www.blackheath-music.co.uk

DUNDEE COURIER

26 JULY 1899

Children Poisoned By Milk

The mysterious circumstances surrounding the supposed poisoning of seventy or eighty children of the Peter's Ragged School, Greenwich, a treat given on Saturday in the grounds of the Knoll, Eliot Park, Granville Park, Lewisham, have been engaging the attention of the medical authorities of the district. The Medical Officer of Health for Greenwich (Dr Hartt) and Dr White, of Lewisham Road, made a special investigation into the remarkable affair.

It is believed that the mischief arose in either the milk or the water with which the tea was made, and it is understood that as the result of a minute investigation certain acids have been found in the milk. It cannot be stated with any degree of certainty whether the milk itself has been found to contain the acids which gave rise to the trouble, or whether it was the water. It is, however, considered highly probable that noxious acids were generated in the urns in which the children's drink was contained, contaminating the liquids poured into them.

The scene of the strange occurrence has now been taken over by Mr T. W. Williams, the chairman of the Lewisham Board of Works. The children are all progressing favourably.

MEMBERSHIP RENEWAL

Members are reminded that the annual subscriptions of £20 per household are due on 1 January.

If you have not updated your standing orders or online banking payments please do so. Our bank details are The Blackheath Society, Lloyds Bank, sort code 30-90-89 and account 00905733. Please quote your surname and postcode as a reference.

NEWSLETTER BY EMAIL

We would like to remind members that you can receive the *Newsletter* by email if you have an Internet connection at home, or on your mobile phone. The email version is sent out the week before the printed copy is available, so you will be able to see it earlier. Using this email service also saves the Society money as it reduces our distribution costs. Please contact the office to do this.

SPOTLIGHT ON OUR VOLUNTEERS

Editor's note: We are starting a regular feature to highlight the work of our volunteers, to thank them and encourage more members to volunteer. This time we feature Jo Swadkin (right), an archivist, and Rosemary Clements (left), a member of the planning group who also does archive work.

Jo started at the Society archive about seven years ago, has lived in Blackheath since 1970 and taught English literature, so she was attracted to doing something different with her archive work on photographs and indexing.

Her interest in history and old buildings was another strong factor in volunteering for this area.

Rosemary is a retired architect who was attracted to planning work and was also intrigued by the complexity of ordering and tagging the Society's store of local photographs so that they can be preserved electronically.

Both are enjoying the archive work, although there can be small frustrations, such as bad handwriting on captions, or a missing photographer's name. They each work one half day a week and enjoy learning about the

Society's activities by listening to the constant flow of visitors in the office.

Jo has helped to proofread the Society's recent books and Rosemary is playing an active part following up cases for the planning group.

They both said the Society needs to continue its efforts to attract a younger membership and that our panel discussion on the state of the Village shops at this year's AGM in June was an excellent initiative.

They suggested highlighting the work of all our volunteers at talks organised by the Society and perhaps having a stall outside Age Exchange on Saturdays to publicise our activities.



WELCOME TO OUR NEW MEMBERS

Tom Evans
*Worshipful Company
of Dyers*

Christopher Jackson

David Jones

Roger Kidley

Roland Lee

Trisha O'Reilly

Susie Templeman

DIARY OF EVENTS - DETAILS PAGE 7

WEDNESDAY 9 JANUARY. Walk and Talk Blackheath storyboards - Walk on the North side, led by John Causer. Please contact the Society office for more details

JANUARY 23 & 12 FEBRUARY. Meet & Eat, Hare & Billet pub

WEDNESDAY 6 FEBRUARY. Tour of Two Temple Place and a visit to the John Ruskin exhibition from 1100 to 1300. Contact the office to book

WEDNESDAY 13 MARCH. Walk and Talk on Victorian Greenwich led by Paul and Liz Wright

© December 2018. The Blackheath Society.

Registered charity no: 259843. Registered with Civic Voice Member of the London Forum of Amenity Societies.

PRESIDENT: Neil Rhind CHAIR: Paul Watts VICE CHAIR: Helen Reeves TREASURER: Andrew Westbrook
SECRETARY: Sacha Bright EDITOR: John Bartram DESIGNER: Pippa Stanton

COMMITTEE MEMBERS: John Bartram, Allan Griffin, Sarah Mansfield, Nick Patton, Nicola Peers, Helen Reeves, John Schofield, Alex Schweitzer, Howard Shields, Diane Summers, David Walker, Paul Watts, Andrew Westbrook, Liz Wright, Helma Zebregs

The Old Bakehouse
11 Blackheath Village
London, SE3 9LA

THE
BLACKHEATH
SOCIETY

020 8297 1937
office@blackheath.org
www.blackheath.org